

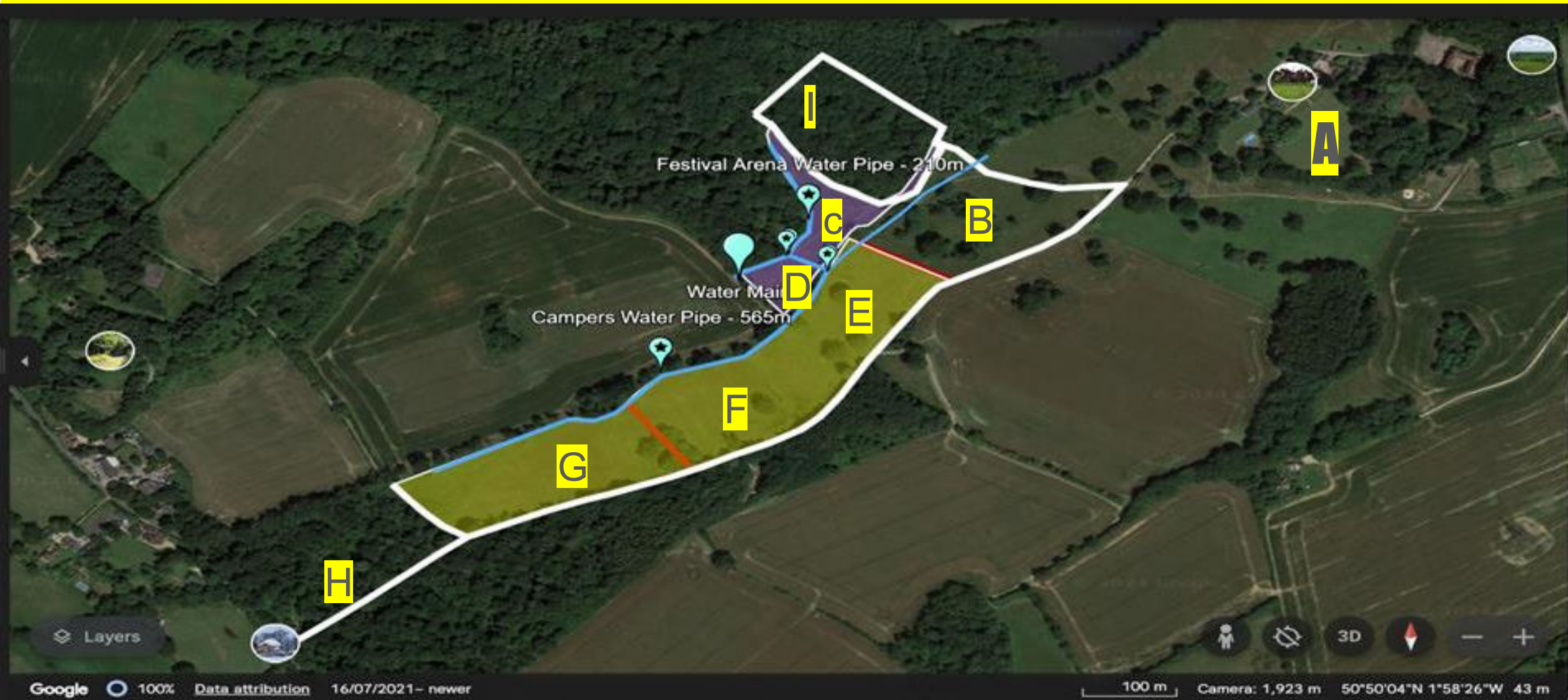
# Site Plan

# Sounds Beautiful

# June 26th-29th 2025

Gaunts House  
Petersham Lane  
BH21 4JQ

# Site map with location points of interest



# Point A

The Blue outline is for the Emergency Services

The track is a hard base track and measures just under 4m wide. The top blue line is the one that takes you past the fire assembly point and the front of Gaunts House, and will be the main route to the festival arena for non customers. The bottom blue line is an alternative route if there are any obstructions

The entrance is located at What 3 word location: Guardian.Repayment.Records

This main entrance will only be used for:

Emergency Services

Deliveries

Artists

Sounds Beautiful Staff

Sound Engineers

The Red outline is to be use for emergency assembly and the out line measures 14,304.31m<sup>2</sup>



# Point A

fire assembly point



artists/delivery/emergency entrance



Emergency exit if others have issue



# Point B

The Blue line is to indicate the emergency services routes that runs from the top centre of the map coming from Gaunts House and the emergency assembly. It runs all the way to the other end of the site and the main entrance for customers

The blue line to the right is the entrance/exit for blue lights if the main route is blocked

The blue line going left is the entrance to the main arena for artists/workers and emergency services: we have used What 3 words for the location Magma.Bookshelf,Peach

This track will also take you to the artists/stall holders carpark

Parking area for traders and artists have a yellow outline and is marked with a blue pin.

What 3 Words Snowmen.Atoms.Shin

Taking the left passage before the carpark whilst keeping the carpark on the right is the direct way to get to the arena and also the healing field

The yellow outline squares are for healing tents

There is also a water pipe on the right that is shown on the map with a white pin and a black star inside it. This can be used for emergency services if needed.

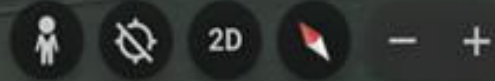
If that route is blocked the blue lights can stay on the track and take a left after the carpark which takes them into the main arena. The water would then be on the left shown on the map with a white pin and a black star inside it

Emergency exit if others have isuse

Parking for Traders & Artist

Kena Water Pipe - 210m

Layers





# Point of interest C

Blue outline is for Emergency Services .One route is going up and right. This will take you to the Comedy/Talk and DJ stage and also the diesel generator. The blue line going left will take you to the traders/main stage and the diesel generator

Comedy/Talk and DJ stage. 6m x 4m DJ Stage standing half meter tall and the marquee: size is: 9x27m -What 3 Words: Makeovers, gangway, proceeds

Generator: What 3 words:

Tastes Beautiful Bar 8x8m What 3 Words: Flocking, Poker, Footsteps

Pizza outlet 5x4m What 3 Words: Skewed, inert, iron

Sirius Food Catering 5x4m What 3 Words: Mavericks, informal, conducted

We Are Human Food 5x5m What 3 Words: Readjust, mimics, skim

Spice food catering 5x5m What 3 words: Brave, Named, Steer

Bar 2 (only if ticket sales provide a need to) 5x5m: What 3 Words: yummy, wrenching, table

Onsite compost toilets What 3 Words: smokers, teaspoons, rainwater

Bell Tent 10x8 : What 3 Words: Slurping, teach, certainly

Traders stalls , Traders will provide purpose built stalls: What 3 Words: Stall, income, cross

# Point of interest C fire safety information

## **Fire Safety**

- A 4m clear route will be established around the perimeter for emergency services access.
- All main structures will be separated by 4m
- Fire points with a water and CO2 extinguisher (place on a stand with identifying signs) will be placed
  - Inside all marquees (2 in large marquees 1 in small)
  - 1 at either side of stage
  - Two in Trader/exhibitor area (number needed to be finalised)
  - One CO2 and powder extinguisher for the diesel generator

Food concessions expected to have their own fire fighting equipment

- All food concession with cooking facilities will be asked to submit or complete the fire risk assessment form from the Fire and Rescue Service.
- A bin area will be provided and all event participants asked to remove combustible rubbish throughout the day to ensure there is not a build up
- All food concession with cooking facilities will be asked to submit or complete the fire risk assessment form from the Fire and Rescue Service

Anything not conforming will be taken off site

- A bin area will be provided and all event participants asked to remove combustible rubbish throughout the day to ensure there is not a build up. Stewards will also monitor this.
  - Central fire pit to be managed by fire officer



# Public Health and Welfare point of interest C

## Toilet Facilities

Toilet Facilities will be self contained units with hand washing facility compost and are already on site provided by Gaunts House. A team of people will be monitoring the toilet facilities for cleanliness. Gaunts House will be responsible for disposal of waste

At present there are toilets in the Arena and Camping areas. Once arena is closed to ticket holders they will be able to use the Camping area toilets  
Signs will be provided to show location of the toilet facilities  
A total of 9 units will be provided

## Comedy/Talk and DJ stage

Comedy/Talk and DJ stage size 6m x 4m standing half meter tall

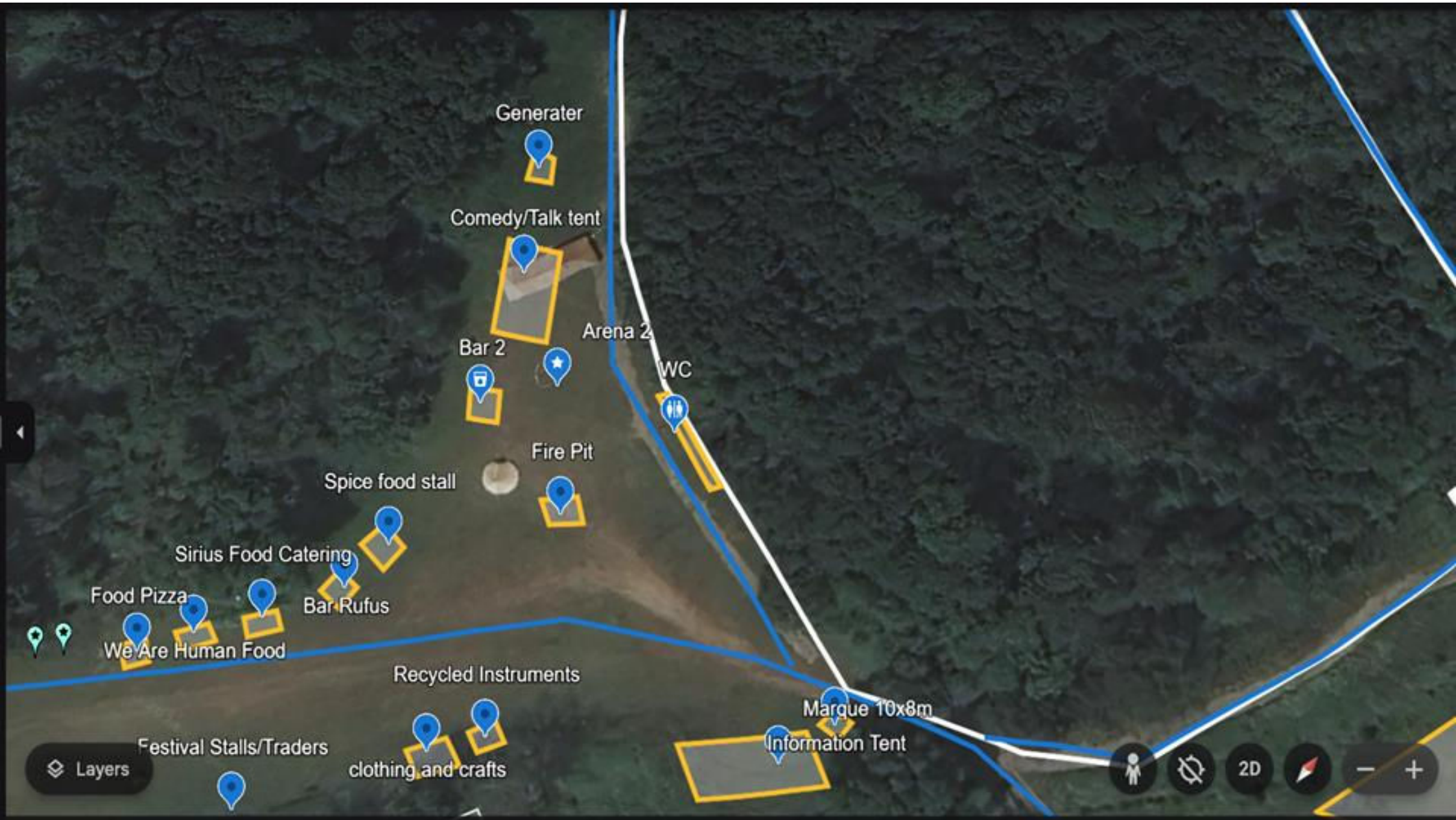
Marque: size is: 9x27m

will be facing the woodland area with a slight hill going up and away from the stage, it will also be facing away from residential properties which will act as a sound barrier.

The noise Control contractor will carry out noise propagation testing throughout the event. This level will be agreed with the Local Authority

The event will have amplified music played in the arena throughout the day and the stage will have live music.

The diesel generator will supply power for this and will be positioned away from public areas (see site plan) and be secured with security fencing and have a CO2 and powder fire extinguishers placed by it



Generater

Comedy/Talk tent

Bar 2

Arena 2

WC

Fire Pit

Spice food stall

Sirius Food Catering

Food Pizza

We Are Human Food

Bar Rufus

Recycled Instruments

Festival Stalls/Traders

clothing and crafts

Marque 10x8m

Information Tent

Layers

2D

# Main Arena: Point of interest D

The Main stage generator will be positioned away from public areas (see site plan) and be secured with security fencing placed and have a CO2 fire extinguisher placed by it. This will power the main stage and will be shut off at the same time as the main stage to reduce any noise near the camping site

Main Stage: What 3 Words: names.buzzards.thanks 9x7m: Provided and constructed by contractors. A purpose built aluminium section on wide foot plates with a plywood floor resulting in a stage height of 1m. Steps with handrails are provided on each side.

- A lighting gantry will be erected over the stage secured using purpose building fixings to the side of the stage structure. All lamps will be secured with safety chains. Speaker stack will be placed on either side of the stage and strapped to the stage frame. Specifications for the stage, lighting gantry and speaker towers are provided by the contractor and supplied with the event plan. The stage will be signed off by the contractor using an in house specialist. A completion. Certificate will be provided before it is used by performers.

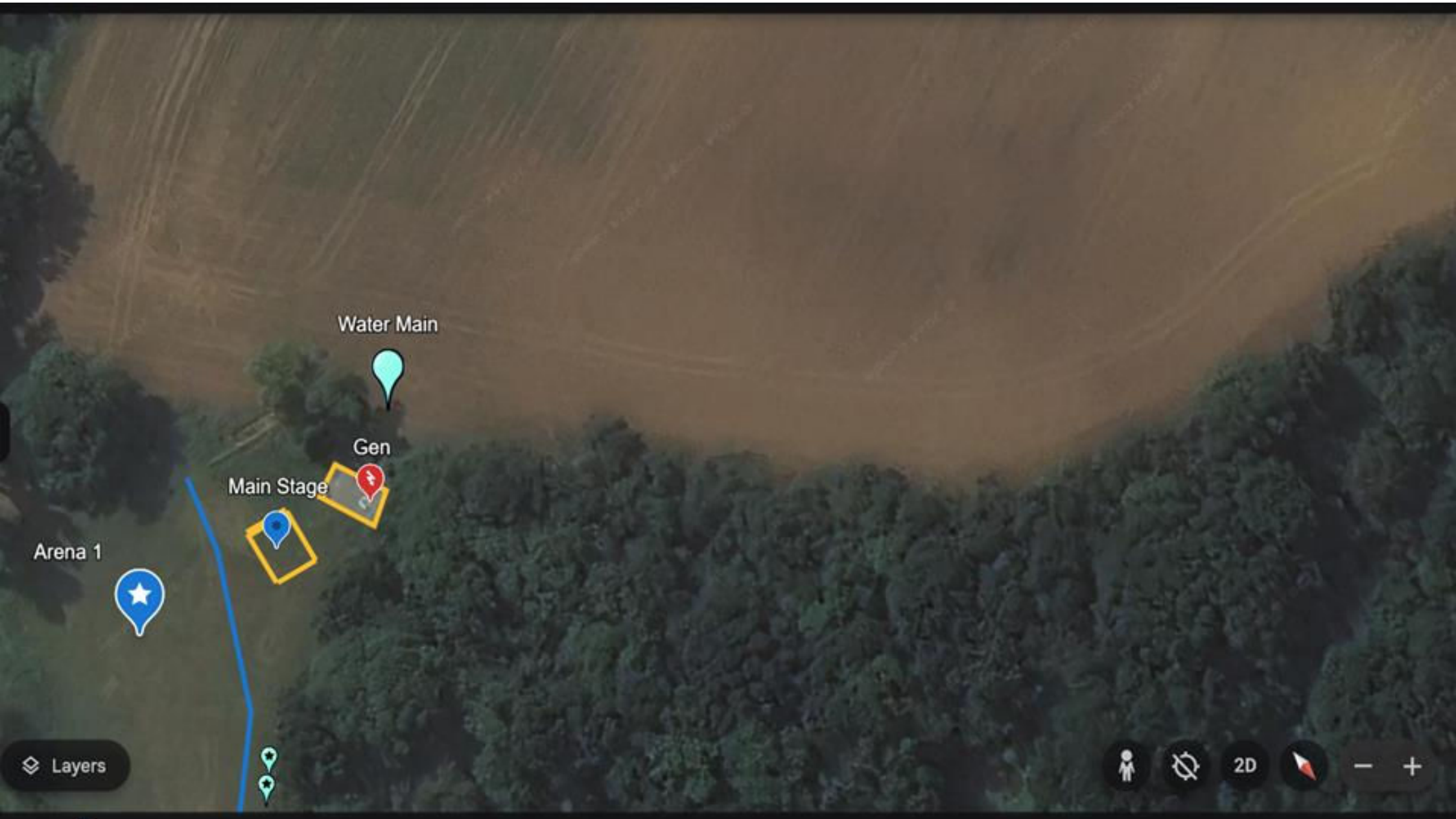
## Fire Safety

The blue line is a continuation from point of interest C and will have  
The ground in cut grass but good access for blue lights

Water supply can be taken from 3 points that are marked on the map with a white pin. The main one is just a pin and the other access points for water supply have the black star inside the white pin

- A 4m clear route will be established around the perimeter for emergency services access.
- All main structures will be separated by 4m
- Fire points with a water and CO2 extinguisher (place on a stand with identifying signs) will be provided





Water Main

Gen

Main Stage

Arena 1

Layers

Navigation and map controls including a person icon, a rotation icon, '2D', a compass icon, and zoom in/out (+/-) buttons.

# Point of interest E

The Blue lines on the right hand side are a continuation of the hard base track from Gaunts House and will be used for blue lights. The blue line in the middle of the healing feild is for the bue light response and is also on point of interest B. This area also has x2 water outlets that can be used for blue light services

Healing Hub 9x9m Marquee: What 3 Words: wing, codes, relished

Homeopathy 3x3m Marquee: What 3 Words: Smashes, figs, printout

Hope sussex 4x4m Marquee: what 3 words: Skimmers, steam, sparkles

Kids Tent 8x8m: What 3 words: Swan, surcharge, topics

Cafe 6x12m: What 3 words: strikers, sprinkler, convert

Generater: What 3 words Orange, shrugging, Junior

3x6m Marquee Healing Area. What 3 Words: Money, digested, traps

First Aid 3x6m Marquee: What 3 Words importing, parents, blinds

Market Traders unknown individual sizes atm: What 3 Words Dive, wins, originals

Security 3x3 Marquee: What 3 words: Innovator, enough, unwound



Healing Hub

Festival Stalls/Traders

Homeopathy Tent

healing workshops

Cafe

Kids Tent

Sussex

Generator

Security

Layers

Information Tent 3x3



# Point of interest F

## Campsite 1

The Blue lines on the right hand side are the continuation of the hard base track from Gaunts House and will be used for blue lights. The Blue line going left is another way to point of interest E but also to campsite 1. There is a slight hill to this location but easy for blue lights to come down. Ground is covered with cut grass but is even

Campsite ones perimeter is 350.95m or 4.486.87m<sup>2</sup> area for camping

On site Compost toilets What 3 words: Towns, producers, city



First Aid and Information Tent 3x3

Camp site 1



Toilet's on site compost



Layers



# Points of interest G

## Camp site 2

The bottom blue line is the continuation of the track from Gaunts House entrance with the hard standing floor

The blue line that is going up the page and round camp site 2 is showing a route for blue lights if needed to get to the bottom of the field to attend the saunas and showers, or if blue lights are needed for that side of the camp site. This is a grass field with a slight hill but good access for blue lights if needed

Campers Water Pipe is marked out with a pin and a black star inside

2x Saunas Provided by a third party company, PLI will be provided by the third party provider. Fencing will be around the Saunas what 3 words: elite.infants.amending and fire extinguisher within the fence boundary & 3x Shower block (unknown size atm) what 3 words:angers.reverses.thrusters

Glamping area to be provided by a third party provider. On site assistance and moneterning of the glamping tents to be provided by the third party provider and al fire safety of equipment. (unknown amount) What 3

Words:Blanks,Craftdman,dark

Blue line to the eft of glamping is for Blue lights if needed. The two sites are split by a slight ditch and this is why we have shown different routes for the different locations. This location is also cut grass with a slight down hill descent but easy access for blue lights



Parking = 35 Cars per 1000 Square foot

Motorhomes 8x8

Quiet Camp Site 2

Showers

Mobile Saunas

Toilets on site compost

Glamping area

Camp site 2

Layers



# Point of interest H

The Bottom blue line is the continuation of the track from Gaunts House entrance with the hard standing floor

The blue line going up the page from the right is splitting the glamping area and the motorhomes with 8m distance to allow space for blue lights but also a fire break to separate the two areas

Motorhomes will have 8x8m pitch

Car parking for 1000 vehicles. 35 cars per 1000ft

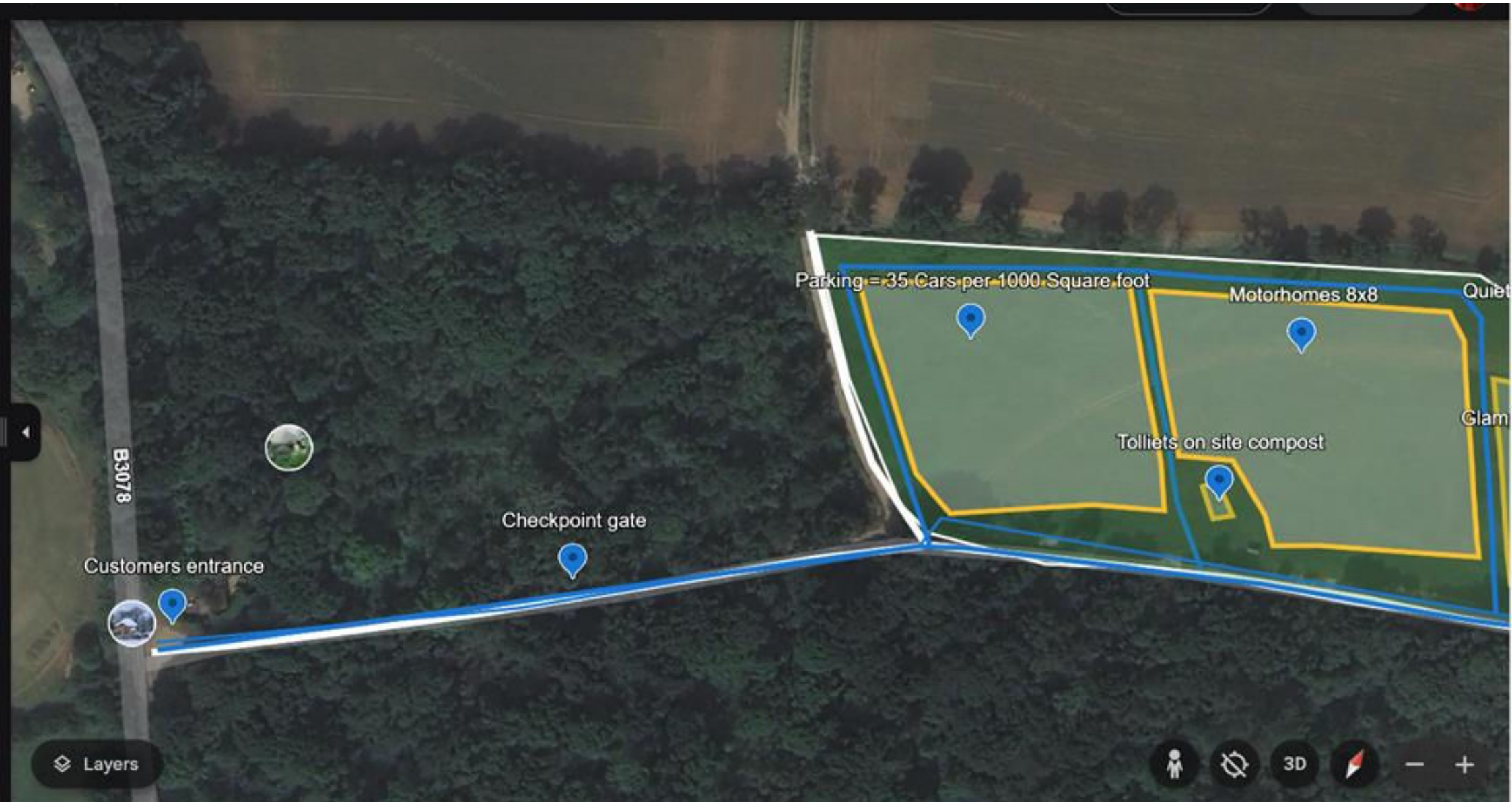
Main gate for customers: Security to monitor and to secure gate at 10pm

What 3 Words: Elite, infants, amending

Checkpoint gate: to make sure people arriving are ticket holders Immunity, loopholes, soon

Security to monitor and fire extinguisher in the area of the the car park What 3 Words: Blanks, Craftdman, dark





Parking = 35 Cars per 1000 Square foot

Motorhomes 8x8

Tolliets on site compost

Checkpoint gate

Customers entrance

B3078

Layers

# Point of interest I

Blue line to show another route for emergency services

If there is a problem within the arena/forest this is an option so they are able to get to the other side. In the event there is a blockage of other routes they are also able to use this to get out. This is a hard standing and 4mt wide easy access



Parking for Traders & Artist

Festival Arena Water Pipe - 210m

Generator

WC

Arena 2

Marque 10x8m

Information Tent

Edward and Co 9x9

Healing Tents unknown/depending on how

Bar 2

Comedy/Talk tent

Fire Pit

Spice food stall

Patrick Bees

clothing and crafts

click to collapse

Layers

Google 100% Data attribution 23/06/2023

70 m Camera: 553 m 50°50'18"N 1°59'04"W 46 m





artists/delivery/emergency entrance

Parking for Traders & Artist

Comedy/Talk tent

Arena 1

Gen

Water Main

Campers Water Pipe - 565m

Camp site 2

Glamping area

Parking = 35 Cars per 1000 Square foot

Showers

Tolliets on site compost

Edward and Co 9x9

Healing Tents unknown/depending on how many healers

Hope Sussex

Festival Arena Water Pipe - 210m

Toilet's on site compost

Quiet Camp Site 2

Hinton Parva

Stanbrid

Bothenwood

Layers

2D